



PORTABLE TOILETS

CATALOGUE
2021

ROTOTEC

SYSTEM GROUP

SIMPLE
as a touch

**SAVING
THE
FUTURE**



CONTENTS

page 2 ADVANTAGES OF **POLYETHYLENE**

page 4 **ITALIA** PORTABLE TOILETS

page 8 **CAPITAL** PORTABLE TOILETS

page 12 **LIGHT** PORTABLE TOILETS

page 14 PORTABLE **DISABLED** TOILET

page 16 **SHOWER CABIN**

page 17 **CHANGING CABIN**

page 19 **ACCESSORIES**

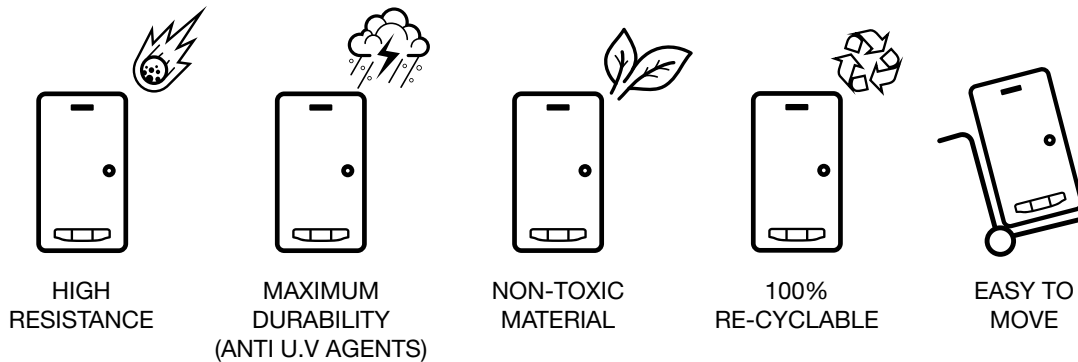
page 22 GRAPHIC **CUSTOMISATION**

page 24 **REGULATIONS**



This technical catalogue and price list is the property of Rototec S.p.A. Any reproduction of its content is strictly forbidden. Rototec S.p.A reserves the right to modify this price list at any time without prior notification.

ADVANTAGES OF POLYETHYLENE



When organising and managing events, promoters today are obliged to provide adequate and fully equipped toilet facilities. These same needs are also applicable to building sites, and even more so in the emergency co-ordination sector where health and hygiene standards are of vital importance.

Rototec offers an innovative range of chemical and hydraulic toilet cabins, shower cabins and changing cabins, made of polyethylene (PE) using rotation moulding technology. Portable chemical toilets, in both the "sit" and "squat" versions, comply with the new standards governing the sector and can be equipped with various accessories that make them more comfortable to use.

Rototec also offers the ability to customise the external appearance of the portable toilet cabin and the changing cabin. The application of an exterior graphic finish in line with the particular application can limit visual impact or highlight the presence of the cabins.





ITALIA PORTABLE TOILETS

Rototec portable toilets are made up of special structural elements that make their use and handling that much easier. The cabin, in fact, is equipped with all the fittings needed to ensure maximum safety during transport and maximum comfort during use. The portable toilets are delivered ready for use.



CONSTRUCTION CHARACTERISTICS



1

VENT



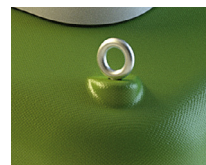
2

POLYETHYLENE
HINGE



3

LATCH
vacant/occupied
indicator and key
lock



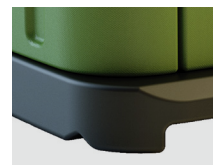
4

STEEL EYE BOLTS
for lifting and
handling
(on request)



5

VENTILATION
WINDOWS



6

RAISED BASE
to allow handling
with fork lift
trucks and pallet
transporters



STANDARD ACCESSORIES



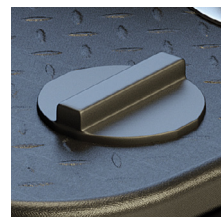
MIRROR/
COAT HANGER



DOUBLE TOILET
ROLL HOLDER



NON-SLIP
FLOOR



BAYONET PLUG
FOR FILLING
(WHERE PROVIDED FOR)

TRANSPORT



Optimisation of footprint for transport:
Standard truck = 24 toilets
40' HC = 20 toilets

MILANO

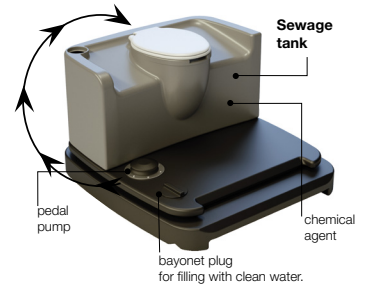


PORTABLE CHEMICAL TOILET WITH CLEAN WATER FLUSH

Portable chemical toilet with seat and clean water flush. Supplied with all standard accessories (page 5)

OPERATION

The toilet has two completely separate tanks, one for the sewage in which the decomposing agent is housed (300ml of decomposing agent in 10 l of clean water) and one (corresponding to the footboard) containing clean water and 50 ml of decomposing agent. The clean water tank is used to flush the bowl by means of a pedal operated diaphragm pump.



Item	Colour	Width mm	Depth mm	H mm	Door opening mm	Weight kg	Sewage storage volume l	Clean water volume l	Uses
BWA100VV	Green	1100	1100	2450	600 x 2000	95	170	100	200 approx.
BWA100BB	Blue	1100	1100	2450	600 x 2000	95	170	100	200 approx.
BWA100GG	Grey	1100	1100	2450	600 x 2000	95	170	100	200 approx.

ROMA

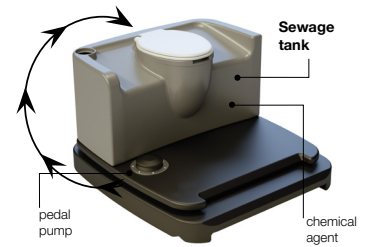


PORTABLE CHEMICAL TOILET WITH RECIRCULATION

Portable chemical toilet with seat and recycled water flush. Supplied with all standard accessories (page 5).

OPERATION

The sewage enters the specially designed tank and is treated with a decomposing agent (300ml of decomposing agent in 10 l of clean water). The waste water is then re-used to flush the bowl by means of a pedal operated diaphragm pump.



Item	Colour	Width mm	Depth mm	H mm	Door opening mm	Weight kg	Sewage storage volume l	Uses
BWR100VV	Green	1100	1100	2450	600 x 2000	95	170	200 approx.
BWR100BB	Blue	1100	1100	2450	600 x 2000	95	170	200 approx.
BWR100GG	Grey	1100	1100	2450	600 x 2000	95	170	200 approx.

TORINO

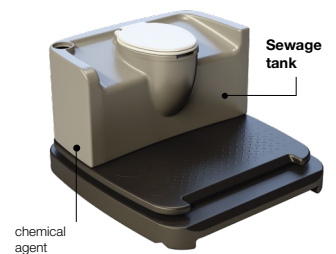


PORTABLE DROP TANK CHEMICAL TOILET

Portable chemical toilet with seat and holding tank, without bowl or flush. Optional recirculation kit for bowl flush. Supplied with all standard accessories (page 5).

OPERATION

The sewage enters the specially designed tank without seat and is treated with a decomposing agent (300 ml of decomposing agent in 10 l of clean water). On request, it is possible to install a recirculation kit (see page 19) that makes use of a manual pump to recycle the waste water to flush the bowl.



Item	Colour	Width mm	Depth mm	H mm	Door opening mm	Weight kg	Sewage storage volume l	Uses
BWC100VV	Green	1100	1100	2450	600 x 2000	95	170	200 approx.
BWC100BB	Blue	1100	1100	2450	600 x 2000	95	170	200 approx.
BWC100GG	Grey	1100	1100	2450	600 x 2000	95	170	200 approx.

BOLOGNA

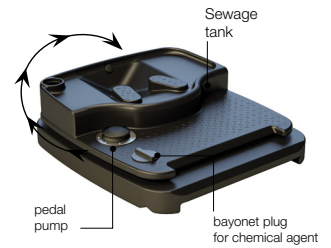


PORTABLE CHEMICAL SQUAT TOILET WITH RECIRCULATION

Portable chemical squat toilet with recycled water flush. Supplied with all standard accessories (page 5).

OPERATION

The sewage enters the specially designed tank and is treated with a decomposing agent (300ml of decomposing agent in 10 l of clean water). The waste water is then re-used to flush the squat pan by means of a pedal operated diaphragm pump.



Item	Colour	Width mm	Depth mm	H mm	Door opening mm	Weight kg	Sewage storage volume l	Uses
BTR100VV	Green	1100	1200	2450	600 x 2000	90	170	200 approx.
BTR100BB	Blue	1100	1200	2450	600 x 2000	90	170	200 approx.
BTR100GG	Grey	1100	1200	2450	600 x 2000	90	170	200 approx.

FIRENZE

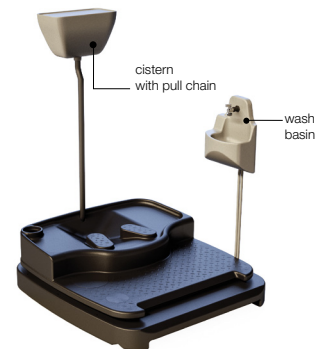


PORTABLE SQUAT TOILET WITH SYPHON AND MAINS WATER FLUSH

Portable squat toilet with flushing cistern, washbasin and tap. A syphon is fitted on the drain. Ideal for fixed installation. Supplied with all standard accessories (page 5).

OPERATION

The squat pan is flushed from the cistern which is fed with mains water or from a storage tank. The sewage is discharged through a syphon directly to the public sewer, to an underground holding tank or a septic tank (see page 18).



Item	Colour	Width mm	Depth mm	H mm	Door opening mm	Weight kg	Outlet pipe Ø mm
BTS100GV	Grey/Green	1100	1200	2450	600 x 2000	85	110
BTS100GB	Grey/Blue	1100	1200	2450	600 x 2000	85	110
BTS100GA	Grey/Orange	1100	1200	2450	600 x 2000	85	110

GENOVA

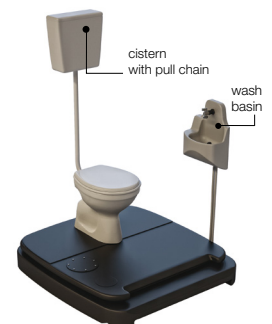


PORTABLE TOILET WITH SYPHON AND MAINS WATER FLUSH

Portable ceramic toilet with flushing cistern, washbasin and tap. A syphon is fitted on the drain. Ideal for fixed installation. Supplied with all standard accessories.

OPERATION

The WC is flushed from the cistern which is fed with mains water or from a storage tank. The sewage is discharged through a syphon directly to the public sewer, to an underground holding tank or a septic tank (see page 18).



Item	Colour	Width mm	Depth mm	H mm	Door opening mm	Weight kg	Outlet pipe Ø mm
BWS100VV	Green	1100	1100	2450	600 x 2000	100	110
BWS100BB	Blue	1100	1100	2450	600 x 2000	100	110
BWS100GG	Grey	1100	1100	2450	600 x 2000	100	110

CAPITAL PORTABLE TOILETS

Rototec introduces the revolutionary concept of the one-piece portable toilet. The originality lies in the fact that it can also be requested in a collapsible version.

The engineering behind this new toilet allows it to be dismantled, and this is where its strength lies, saving transport costs, optimising transport space and simplifying storage. Aspects of vital importance on both a national and international scale.



CONSTRUCTION CHARACTERISTICS



1

VENT PIPE



2

POLYETHYLENE HINGE



3

LATCH with vacant/occupied indicator and key lock



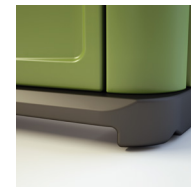
4

EYE BOLTS No. 4 for lifting



5

VENTILATION HOLES



6

RAISED BASE to allow handling with fork lift trucks and pallet transporters



ON REQUEST dismantled



STANDARD ACCESSORIES



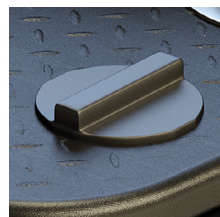
MIRROR/
COAT HANGER



DOUBLE TOILET
ROLL HOLDER



NON-SLIP
FLOOR



BAYONET PLUG
FOR FILLING
(WHERE PROVIDED FOR)

TRANSPORT



Optimisation of footprint for transport:
Standard truck = 24 toilets or 48 collapsible toilets
20 box = 20 collapsible toilets
40' HC = 20 toilets or 34 collapsible toilets

PARIGI

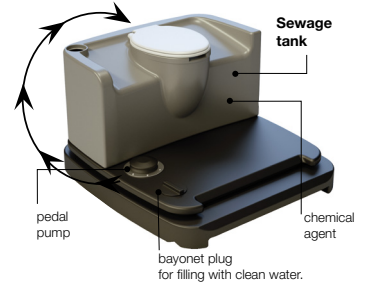


PORTABLE CHEMICAL TOILET WITH CLEAN WATER FLUSH

Portable chemical toilet with seat and clean water flush. Supplied with all standard accessories (page 9).

OPERATION

The toilet has two completely separate tanks, one for the sewage in which the decomposing agent is housed (300ml of decomposing agent in 10 l of clean water) and one (corresponding to the footboard) containing clean water and 50ml of decomposing agent. The clean water tank is used to flush the bowl by means of a pedal operated diaphragm pump.



Item	Colour	Width mm	Depth mm	H mm	Door opening mm	Weight kg	Sewage storage volume l	Clean water volume l	Uses
BWA200VV	Green	1100	1100	2450	600 x 2000	95	170	100	200 approx.
BWA200BB	Blue	1100	1100	2450	600 x 2000	95	170	100	200 approx.
BWA200GG	Grey	1100	1100	2450	600 x 2000	95	170	100	200 approx.

BRUXELLES

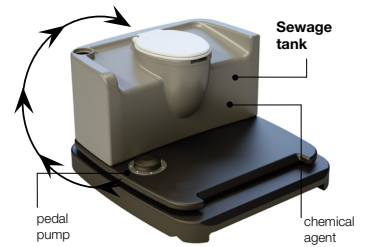


PORTABLE CHEMICAL TOILET WITH RECIRCULATION

Portable chemical toilet with seat and recycled water flush. Supplied with all standard accessories (page 9).

OPERATION

The sewage enters the specially designed tank and is treated with a decomposing agent (300ml of decomposing agent in 10 l of clean water). The waste water is then re-used to flush the bowl by means of a pedal operated diaphragm pump.



Item	Colour	Width mm	Depth mm	H mm	Door opening mm	Weight kg	Sewage storage volume l	Uses
BWR200VV	Green	1100	1100	2450	600 x 2000	95	170	200 approx.
BWR200BB	Blue	1100	1100	2450	600 x 2000	95	170	200 approx.
BWR200GG	Grey	1100	1100	2450	600 x 2000	95	170	200 approx.

VIENNA

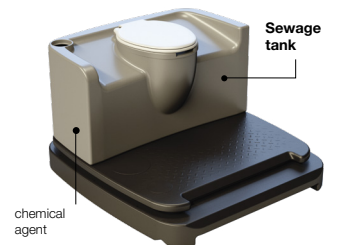


PORTABLE DROP TANK CHEMICAL TOILET

Portable chemical toilet with seat and holding tank, without bowl or flush. Optional recirculation kit for bowl flush. Supplied with all standard accessories (page 9).

OPERATION

The sewage enters the specially designed tank without seat and is treated with a decomposing agent (300 ml of decomposing agent in 10 l of clean water). On request, it is possible to install a recirculation kit (see page 19) that makes use of a manual pump to recycle the waste water to flush the bowl.



Item	Colour	Width mm	Depth mm	H mm	Door opening mm	Weight kg	Sewage storage volume l	Uses
BWC200VV	Green	1100	1100	2450	600 x 2000	95	170	200 approx.
BWC200BB	Blue	1100	1100	2450	600 x 2000	95	170	200 approx.
BWC200GG	Grey	1100	1100	2450	600 x 2000	95	170	200 approx.

MADRID

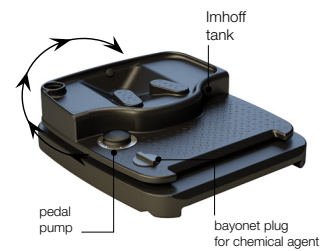


PORTABLE CHEMICAL SQUAT TOILET WITH RECIRCULATION

Portable chemical squat toilet with recycled water flush. Supplied with all standard accessories (page 9).

OPERATION

The sewage enters the specially designed tank and is treated with a decomposing agent (300ml of decomposing agent in 10l of clean water). The wastewater is then re-used to flush the squat pan by means of a pedal operated diaphragm pump.



Item	Colour	Width mm	Depth mm	H mm	Door opening mm	Weight kg	Sewage storage volume l	Uses
BTR200VV	Green	1100	1200	2450	600 x 2000	90	170	200 approx.
BTR200BB	Blue	1100	1200	2450	600 x 2000	90	170	200 approx.
BTR200GG	Grey	1100	1200	2450	600 x 2000	90	170	200 approx.

BERLINO

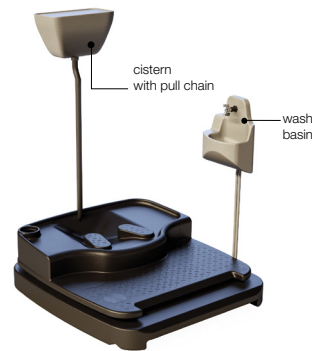


PORTABLE SQUAT TOILET WITH SYPHON AND MAINS WATER FLUSH

Portable squat toilet with flushing cistern, washbasin and tap. A syphon is fitted on the drain. Ideal for fixed installation. Supplied with all standard accessories (page 9).

OPERATION

The squat pan is flushed from the cistern which is fed with mains water or from a storage tank. The sewage is discharged through a syphon directly to the public sewer, to an underground holding tank or a septic tank (see page 18).



Item	Colour	Width mm	Depth mm	H mm	Door opening mm	Weight kg	Outlet pipe Ø mm
BTS200GV	Grey/Green	1100	1200	2450	600 x 2000	85	110
BTS200GB	Grey/Blue	1100	1200	2450	600 x 2000	85	110
BTS200GA	Grey/Orange	1100	1200	2450	600 x 2000	85	110

LISBONA

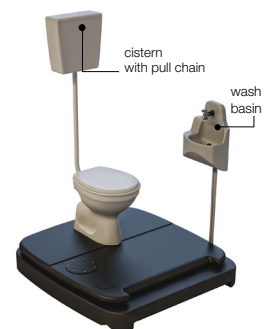


PORTABLE TOILET WITH SYPHON AND MAINS WATER FLUSH

Portable ceramic toilet with flushing cistern, washbasin and tap. A syphon is fitted on the drain. Ideal for fixed installation. Supplied with all standard accessories.

OPERATION

The WC is flushed from the cistern which is fed with mains water or from a storage tank. The sewage is discharged through a syphon directly to the public sewer, to an underground holding tank or a septic tank (see page 18).



Item	Colour	Width mm	Depth mm	H mm	Door opening mm	Weight kg	Outlet pipe Ø mm
BWS200VV	Green	1100	1100	2450	600 x 2000	100	110
BWS200BB	Blue	1100	1100	2450	600 x 2000	100	110
BWS200GG	Grey	1100	1100	2450	600 x 2000	100	110

LIGHT PORTABLE TOILETS

Rototec introduces the revolutionary concept of the one-piece light-weight portable toilet. The light toilet can also be requested dismantled.



1
N°4 EYE BOLTS
for lifting
(on request)



2
DOOR LOCK
Vacant/occupied
indicator and key
lock



3
VENTILATION
WINDOWS



4
RAISED BASE
For handling with fork
lift trucks and pallet
transporters



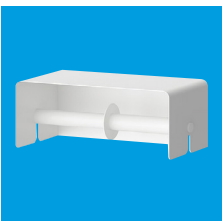
5
POLYETHYLENE
HINGE



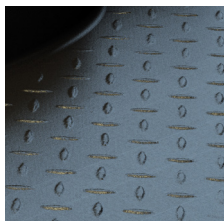
STANDARD ACCESSORIES



MIRROR/
COAT HANGER



DOUBLE TOILET
ROLL HOLDER



NON-SLIP
FLOOR

TRANSPORT



Optimisation of footprint for transport:
Standard truck = 26 toilets or 90 collapsible toilets
20 box = 10 toilets or 35 collapsible toilets
40' HC = 22 toilets or 70 collapsible toilets

BRUXELLES LIGHT

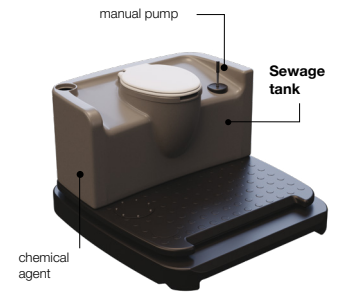


PORTABLE CHEMICAL TOILET WITH RECIRCULATION

Portable chemical toilet with seat and recycled water flush. Supplied with all standard accessories (page 12).

OPERATION

The sewage enters the specially designed tank and is treated with a decomposing agent (300ml of decomposing agent in 10 l of water). The waste water is then re-used to flush the bowl by means of a manually operated diaphragm pump.



Item	Colour	Width mm	Depth mm	H mm	Door opening mm	Weight kg	Sewage storage volume l	Uses
BWR300VG	Green/grey	1007	1007	2252	670 x 1950	± 73	250	300 approx.
BWR300BG	Blue/grey	1007	1007	2252	670 x 1950	± 73	250	300 approx.

VIENNA LIGHT



PORTABLE DROP TANK CHEMICAL TOILET

Portable chemical toilet with seat and holding tank, without bowl or flush. Optional recirculation kit for bowl flush. Supplied with all standard accessories (page 12).

OPERATION

The sewage enters the specially designed tank without seat and is treated with a decomposing agent (300 ml of decomposing agent in 10 l of water). On request, it is possible to install a recirculation kit (see page 19) that makes use of a manual pump to recycle the waste water to flush the bowl.



Item	Colour	Width mm	Depth mm	H mm	Door opening mm	Weight kg	Sewage storage volume l	Uses
BWC300VG	Green/grey	1007	1007	2252	670 x 1950	± 73	250	300 approx.
BWC300BG	Blue/grey	1007	1007	2252	670 x 1950	± 73	250	300 approx.

LISBONA LIGHT

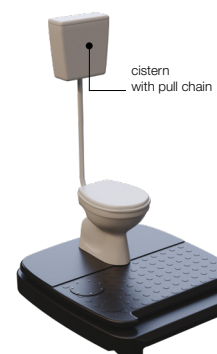


PORTABLE TOILET WITH SYPHON AND MAINS WATER FLUSH

Portable ceramic toilet with flushing cistern, washbasin and tap. A syphon is fitted on the drain. Ideal for fixed installation. Supplied with all standard accessories (page 12).

OPERATION

The WC is flushed from the cistern which is fed with mains water or from a storage tank. The sewage is discharged through a syphon directly to the public sewer, to an underground holding tank or a septic tank (see page 18).



Item	Colour	Width mm	Depth mm	H mm	Door opening mm	Weight kg	Outlet pipe Ø mm
BWS300VG	Green/grey	1007	1007	2252	670 x 1950	± 73	110
BWS300BG	Blue/grey	1007	1007	2252	670 x 1950	± 73	110

PORTABLE DISABLED TOILETS



STANDARD ACCESSORIES



Washbasin
(optional on request)



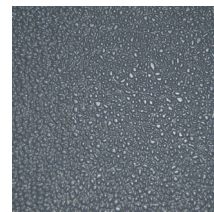
Grab rails



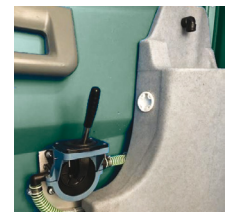
Double toilet roll
holder



Ventilation grilles



Non-slip floor



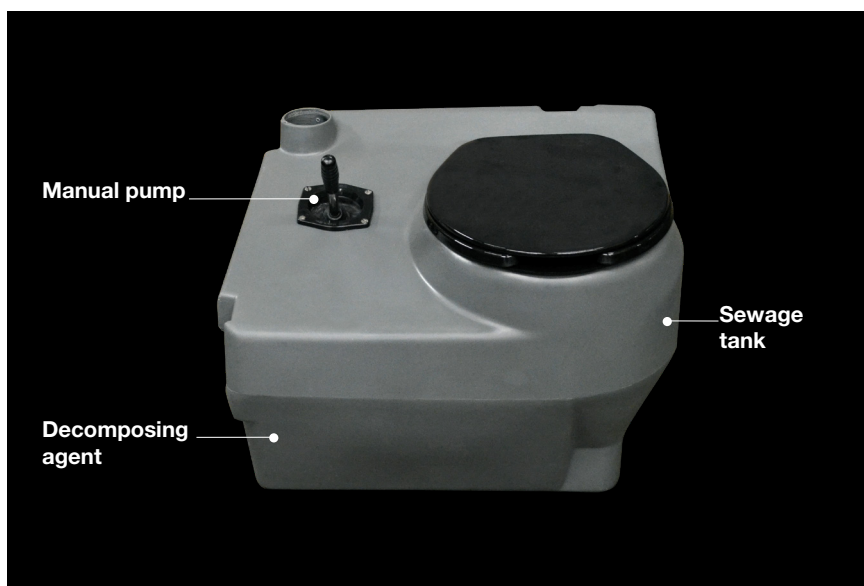
Hand pump kit
(optional on request)

MAXI PRAGA

PORTABLE CHEMICAL DISABLED TOILET WITH RECIRCULATION

Rototec has developed the Portable Disabled Toilet to meet needs of physically impaired persons and to allow everyone to participate at events.

The wide entrance door and obstacle-free access are designed to allow the passage of a wheelchair. Internally, the user can quite easily move in total safety, thanks to the spaciousness of the compartment, the presence of grab rails on the walls and a floor in special non-slip material enabling full 360° mobility and easy seating. The Portable Toilet is built in anti-UV stabilised polyethylene (PE) and is 100% recyclable.



Seat with chemical toilet and recirculation flush. The sewage enters the specially designed tank and is treated with a decomposing agent. The waste water is then re-used to flush the bowl by means of a manually operated diaphragm pump.

Plenty of manoeuvring space, ergonomic, easy access thanks to the step-free ramp.

Item	Colour	Width mm	Depth mm	H mm	Door opening mm	Weight kg	Sewage storage volume l	Sewage tank H mm
BDWR500VV	Green	1550	1550	2200	900 x 1870	127	150	495
BDWR500ZZ	Blue	1550	1550	2200	900 x 1870	127	150	495

Shipping contribution to be given separately

SHOWER CABIN

Rototec's comfortable shower cabins are available with hot or cold water. They are spacious and comfortable, allowing you to wash easily and hang up your clothes without getting them wet, thanks to the fact they are fitted with spray guards. The floor is non-slip for greater safety during use.

- 1 Towel hanger inside, over the door
- 2 Water heater (only present in the LONDRA model)
- 3 Ventilation grills
- 4 Base with raised edges to hold the water and ensure adequate drainage
- 5 Vent
- 6 Raised base to allow movement with a fork lift truck, presence of grips to facilitate loading/unloading from the truck



LONDRA

SHOWER CABIN WITH HOT WATER

The Londra portable shower is designed to be connected with ease to the available water source, and the gas water heater provides a flow of hot water for users almost immediately.

Item	Colour	Width mm	Depth mm	H mm	Door opening mm	Weight kg
CDC600AA	Blue	1118	1219	2235	610 x 1854	121

ATENE

SHOWER CABIN WITH COLD WATER

The Atene portable shower is designed to be connected with ease to the water source.

Item	Colour	Width mm	Depth mm	H mm	Door opening mm	Weight kg
CDF600AA	Blue	1118	1219	2235	610 x 1854	121

CHANGING CABIN

Changing cabins with every comfort, excellent to be used as changing rooms, comfortable and essential for use on job sites or beaches, they are extremely practical to move.

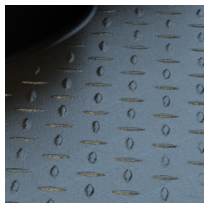
- 1 Vent
- 2 Polyethylene hinge
- 3 Latch with vacant/engaged indicator and key lock
- 4 Steel eye bolts for lifting and handling (on request)
- 5 Ventilation windows
- 6 Raised base for movement using fork lift trucks and pallet transporters.



STANDARD ACCESSORIES



MIRROR/
COAT HANGER



NON-SLIP
FLOOR

PALERMO CHANGING CABIN

Item	Colour	Width mm	Depth mm	H mm	Door opening mm	Weight kg
CSP100VV	Green	1100	1100	2450	600x2000	90
CSP100BB	Blue	1100	1100	2450	600x2000	90
CSP100GG	Grey	1100	1100	2450	600x2000	90

INSTALLATION EXAMPLES OF PORTABLE SQUAT/WC TOILETS WITH SYPHON

(FIRENZE, GENOVA, BERLINO, LISBONA, LISBONA LIGHT)



DISCHARGE TO HOLDING TANK



DISCHARGE TO IMHOFF TYPE SEPTIC TANK



DISCHARGE TO PUBLIC SEWER



SEWAGE HOLDING TANK

Item	Volume l	Ø mm	Length x Width mm	Height mm	Inspection Ø mm	Extension
PI1000	1040	1200	-	1050	300	PP35
PI2000	2075	1500	-	1330	400	PP45
CI3000	3100	-	2090 x 1500	1720	630	PP77
CI5700	5700	-	2420 x 1920	2100	630	PP77
CI10700	10700	-	2780 x 2430	2580	630	PP77

NB: For other models please see the Water Division chapter in the 2020 General Catalogue



IMHOFF SEPTIC TANK

Item	Users	Volume l	Internal mm	Height mm	Inspection Ø mm	Extension
NIM1000	18	850	1150	1220	400-200	PP45-PP30
NIM1500	27	1268	1150	1720	400-200	PP45-PP30
NIM2600	40	2061	1710	1450	400-300	PP45-PP35

NB: For other models please see the Treatment Division chapter in the 2020 General Catalogue

ACCESSORIES

WASHBASIN



WASHBASIN

Washbasin with pedal-operated diaphragm pump, complete with fill plug.

Item	Capacity	N° of uses
BLAV 100	60	170



LIGHT TOILET WASHBASIN

Washbasin with pedal-operated diaphragm pump, complete with fill plug.

Item	Capacity	N° of uses
BLAV300	40	115



WASHBASIN

Suspended washbasin with water supply from the mains or from a storage tank.

Item
BLAVM100

URINAL



URINAL

Wall-mounted urinal. Outlet discharges to the sewage holding tank. Available for the Milano, Roma and Torino models.

Item
BORI



URINAL TABLETS

Perfumed tablets with lemon fragrance.

Item	Q.ty pcs
BPORI 20	20
BPORI 50	50

RECIRCULATION KIT



RECIRCULATION KIT

Manual pumping system for toilet bowl flushing with recirculated water. Consisting of a manual pump, scratch-proof sanitary ware bowl and piping with filter. Available for the Torino, Vienna and Vienna Light models.

Item
BKRC



MANUAL PUMP FOR DISABLED TOILET

Manual pumping system to supply the washbasin.

Item
PLBD

DEODORIZING/DECOMPOSING AGENTS



CHEMICAL DECOMPOSING AGENT LIQUID

Tank of deodorizing and decomposing syrup

Item	Capacity l
BLDIS 5	5
BLDIS 20	20
BLDIS 50	50
BLDIS 100	100



CHEMICAL DECOMPOSING AGENT PLUS

Soluble packets for use in the case of high temperatures and heavy traffic.

Item	Quantity pcs
BBDIS 50	50



CHEMICAL DECOMPOSING AGENT EVENT

Soluble packets for use during events and on a daily basis

Item	Q.ty pcs
BBDIS 100	80



DEODORANT DISKS

Perfumed felt disks, to hang in the toilet.

Item	Q.ty pcs
BPDEO 100	100

SANITISING PRODUCTS



SANITISING HAND GEL

Quick-drying rapid sanitising hand gel to be used directly or as a refill for dispensers.

Item	Packaging
IGLV1000	500 ml plastic bottle



LIQUID SANITISER

Activated oxygen-based liquid additive to sanitise surfaces

Item	Packaging
IGLV1000	500 ml plastic bottle



HAND WASHING SOAP

Sanitising hand washing soap.

Item	Capacity l
BCGEL	1



DISPENSER

Hand washing gel dispenser.

Item
BDISP



TOWEL HOLDER WITH TOWELS

Item	Components
PSVBC	towel holder + 100 towels



SANITISING MAT

Mat with sanitising liquid

Item	Size width x length
TPIG4070	40X70 cm

TROLLEYS



TROLLEY WITH HANDLE

Device to move Rototec portable toilets. Folding handles and footboard to reduce the footprint.

Item

BCARMG



HAND WASH GEL

Solid wheel axle for manually transporting one toilet cabin. Fitted to the cut-outs in the underside of the toilet cabin.

Item

BCAR

EYE BOLTS KIT



EYE BOLTS KIT FOR ITALIA TOILETS

No. 2 galvanised steel eye bolts for movement of the empty portable toilet.

Item

KITWCGOL



EYE BOLTS KIT FOR LIGHT TOILETS

No. 4 galvanised steel eye bolts for movement of the empty portable toilet.

Item

KITWCLGGOL

LED LIGHT



Compact battery-operated LED light with movement sensor and light sensor. Ideal for installation inside small, dark rooms that are only entered occasionally (e.g. portable toilets).

Item	Length mm	Width mm	Depth mm	Working temperature °C	Lumen lm
KITWCGOL	105	86	36	-20 / +50	18

DRAIN VALVE



Throttle valve for 2" sewage drain

Item

VSF2FFB + BS2

GRAPHIC CUSTOMISATION

As always, Rototec attentively follows the new market trends and is always ready to offer innovative products. For this reason, Rototec Portable Toilets and Changing cabins are not only manufactured with different coloured finishes but can also be personalised with custom adhesive graphic finishes. In this way, the finishes have a dual function: respect for the surrounding environment by reducing the visual impact of the toilet cabin to zero (e.g.: perfect camouflage for a golf course) or highlighting its presence and making the product recognisable by means of impact graphics (e.g.: publicity for cities of art). The toilet cabin and the changing cabin are further transformed into a true and proper item of furniture and communication, acquiring added value without losing their primary function.

STANDARD ONE-COLOUR



VV BB GG

STANDARD TWO-COLOUR



GV GB GA

NON-STANDARD COLOUR

minimum order 24 units



AA LL RR VV1

ITALIA TOILETS



SPORTS GRAPHIC

URBAN THEME



ADHESIVE FRONT GRAPHICS
LOGO APPLICATION

Item

4CCS



ADHESIVE DOOR GRAPHICS

Description

Door adhesive with application

Processing new image on cutting die



ADHESIVE GRAPHICS
RH or LH SIDE

Description

RH or LH side adhesive with application

Processing new image on cutting die



COMPLETE ADHESIVE
GRAPHICS

Description

Full adhesive with application

Processing new image on cutting die

CAPITAL TOILETS



ADHESIVE FRONT GRAPHICS
LOGO APPLICATION

Item

4CCS



ADHESIVE FRONT GRAPHICS

Description

Front adhesive with application

Processing new image on cutting die



ADHESIVE GRAPHICS
RH or LH SIDE

Description

RH or LH side adhesive with application

Processing new image on cutting die



COMPLETE ADHESIVE GRAPHICS

Description

Full adhesive with application

Processing new image on cutting die

LIGHT TOILETS



ADHESIVE FRONT GRAPHICS
LOGO APPLICATION

Item

4CCS

SUMMARY OF STANDARD UNI EN 16194:2012 (MOBILE NON-SEWER CONNECTED TOILET CABINS: REQUIREMENTS OF SERVICES AND PRODUCTS RELATING TO THE DEPLOYMENT OF CABINS AND SANITARY PRODUCTS).

Introduction - Over the last ten years, the use of portable toilets (so-called "chemical toilets") has become more and more widespread, to the extent that now they can be seen in all building and road construction sites, at all public open-air events, during emergencies, etc.. Up until now, there were no standards governing this service, not even those laying down the minimum performance requirements to guarantee to the user. Now, finally, a new UNI standard has been introduced to fill this gap. The corresponding European Standard EN 16194 has been formally implemented as from the start of 2012 and came into force in Italy on 12th April 2012 with the Italian standard UNI EN 16194.

A standard for the Service - Standard UNI EN 16194 not only lays down the requirements for the toilets, but also specifies the essential requirements for the service itself, starting with the number of toilets to be installed according to the number of expected users. In fact, for construction sites, the standard specifies one portable toilet for every 10 users, including both site workers and subcontractors. It specifies that the maximum distance from each work station to the toilet must not exceed 100 metres and that, in the case where the sites are on more than one level, there must be at least one toilet every 2 levels. For events open to the public, the standard adopts the table prepared by the American association PSAI (Portable Sanitation Association International) which defines the minimum number of toilets to be installed as a function of the number of expected users and the duration of the event (see table).

Minimum toilet requirements - The portable toilet is defined in broad terms without any detailed specifications, to allow each manufacturer freedom to offer innovations and alternatives. The minimum requirements, however, are fixed. Each toilet must have a minimum internal area of at least 1m² and an internal height of at least 2 metres, sufficient ventilation and adequate internal lighting. The door must be self-closing, must be fitted with a vacant/occupied indicator, must be openable from the inside and from the outside and must be lockable from the inside (e.g. with a key or latch). It must also be openable from the outside in case of an emergency. The interior of the toilet must have a container for toilet paper, a clothes hook and a sewage tank equipped with a toilet seat or other support allowing use in a seated position. The sewage container must vent to air and can be one of three types:
 a - drop type
 b - recirculation type (with hand or pedal-operated pump)
 c - clean water type (with hand or pedal-operated pump)

Supplementary accessories are allowed but are not obligatory, such as a mirror, light, urinal, hand washer, soap and/or disinfectant dispenser and/or paper towel dispenser.

Toilets for the disabled - Toilets for the disabled, up until now available at some events but not all, now play a role. The standard, in fact, defines the obligation to provide at least one toilet for the disabled, i.e. wheelchair-friendly, at each event. To this end, the door must be at least 80 cm wide and the interior must have a width and depth of at least 140 cm. The ability of the wheelchair to carry out one complete revolution inside the toilet is not required, though the entrance must be at ground level, (i.e. not steps or ramps).

Short-term or long-term hire
 The standard defines the information that must be provided for stipulating a short-term or long-term hire contract. The aim is to render the rapport between supplier and hirer that much easier by simplifying discussions on content as much as possible.

Requirements of services - In this section, the standard lists the operations that must be carried out when providing the service, such as complete emptying of sewage, cleaning of single components (listed one by one), replacement of agreed consumable materials, addition of sanitizing concentrate and water. Damaged toilets must be repaired on site or replaced. The requirements for delivering the toilets are also defined (they must be ready for use, complete with sanitizing solution and agreed consumable materials, such as toilet paper, soap, etc.) Similarly for collection of the toilet following complete emptying of the sewage and removal of consumable materials.

Declaration of conformity of the service - The hire company complying with the requirements of standard UNI EN 16194 is authorised to communicate this in its communications with customers and the public, in advertisements and on adhesives applied to the toilets, etc., with the declaration: "SERVICE PROVIDED IN ACCORDANCE WITH UNI EN 16194".

MINIMUM NUMBER OF TOILETS TO PROVIDE AT EVENTS OPEN TO THE PUBLIC
(50% male - 50% female)

Number of users	Toilets required (for events up to 6 hours)	Toilets required (for events up to 12 hours)
Up to 249	2	3
From 250 to 499	3	5
From 500 to 999	6	9
From 1000 to 1999	12	18
From 2000 to 2999	25	38
From 3000 to 3999	38	57
From 4000 to 4999	50	75
From 5000 to 5999	63	95
From 6000 to 6999	75	113
From 7000 to 7999	88	132
From 8000 to 8999	100	150
From 9000 to 9999	113	170
From 10000 to 12499	125	188
From 12500 to 14999	156	234
From 15000 to 17499	188	282
From 17500 to 19999	219	329
20000	250	375
Over 20000	To be assessed case by case	

For the complete standard, contact: UNI, Via Sannio, 2 - 20137 Milan; www.store.uni.com or www.uni.com

GENERAL CONDITIONS OF SALE

1. CONTRACT This contract is made between Rototec Spa, hereafter indicated as the “Manufacturer”, and the purchasing company, hereafter indicated as the “Customer”. By signing this contract, the Customer issues the Manufacturer with an irrevocable order for supply. The sale is understood to have been completed at the time this contract is accepted. Any variations must be communicated and authorised in writing by the Sales Management. It is specified that failure by the Customer to communicate that the goods supplied form part of a Public Tender or Monitored Major Works with the obligations deriving therefrom, will entitle the Manufacturer to terminate the contract by right without any consequence, together with immediate notification of the Commissioning Body, the Ministry for Economic Development and the Prefectures involved to indicate the failure to respect the legal obligations foreseen for these supplies, together with the legal sanctions. These General Conditions of Sale form an integral part of each contract, unless otherwise specified in writing, they come into full effect between the parties and are understood to be unconditionally and fully accepted at the time the purchase order is issued, without said acceptance being conditional on actual signature by the Customer.

2. PRICE The price to be paid for the goods supplied is the one indicated analytically in this contract. The prices, including all the charges to supply the services required, are understood to be fixed and invariable and are therefore confirmed until we send FURTHER NOTIFICATION. Deliveries must have a fixed notice of 15 days, so the material will have a price that is valid for delivery requests received by our offices not later than After this date the Manufacturer reserves the exclusive right to proceed with supply, applying any revised prices that may be agreed.

3. TRANSPORT AND PACKAGING The goods are understood to be delivered free to your site. The packaging is provided by the Manufacturer free of charge, with the exception of special requests. The goods are transported at the risk of the Customer, including when sold free port and transported using Rototec vehicles.

4. DELIVERY TIMES The delivery times indicated in this contract are purely indicative. The Manufacturer shall not be liable in any way for direct and/or indirect damage caused by delays in delivery of the goods. The delivery times are also understood to be extended due to late definition or variation of the order itself. The extension period will depend on prior analysis of the manufacturing situation.

5. INVOICING The invoice issued by the Manufacturer to the Customer must be made out as indicated in the order and will be issued in line with current tax legislation. The Customer will give timely written notice of any changes that may modify the data in the possession of the Manufacturer, and this shall be done prior to issue of the invoice itself.

6. PAYMENT TERMS AND CONDITIONS Payments shall be made, free of all expenses, to the place of business of the Manufacturer, at the times and in the manners set out in this contract. Payments made to persons not directly authorised in writing by the Manufacturer shall not be recognised. In the event of delayed payment, interest shall be due at the B.C.E. rate increased by 7 percent (pursuant to Art. 5 of Leg. Dec. 231/02) . The Manufacturer reserves the right to suspend supply should the Customer fail to respect the payment terms agreed in the contract or should the Customer have unpaid debts to the Manufacturer and/or to other subsidiary and/or associated companies in the group: Centraltubi Spa, Italiana Corrugati Spa, Futura Spa , Rototec Spa, Sa.Mi Plastic Spa, Sab Spa, Lucania Resine Srl, Pebo Spa , Mecsystem Srl, Syetem Group Pvc s.r.l. It is hereby specified that, pursuant to article 1523 of the Italian Civil Code (Title retention agreement), transfer of ownership of the material to the buyer will only take place upon payment of the final portion of the agreed price, but the latter will take on all risks and liabilities from the time of delivery.”

7. CREDIT LIMIT The Customer will be granted a credit limit of

..... based on the assessment of the Credit assurance Company, without prejudice to the contents of point 6. The Manufacturer reserves the right to stop the supply in the event that the Customer is downgraded by the Credit Assurance Company based on its solvency (as a non-limiting example a change in grade) during the supply process. In the event of stoppage the Manufacturer reserves the right, in order to resume supply, to renegotiate the terms of future payment.

8. TRANSFER OF CREDIT This order is non-transferable and it is expressly agreed that the credit deriving from this supply shall not be transferred or delegated in any form, without the prior assessment and written authorisation of the Manufacturer.

9. WARRANTIES All the Manufacturer’s products can be supplied with technical certificates in compliance with regulations in force and are guaranteed by the Manufacturer as of the date of delivery of the goods indicated on the delivery note. Warranty refers to replacement free of charge, with the exception of the cost of removal, of any product that in the sole opinion of the Manufacturer is to be considered faulty due to manufacturing or material defects. Any products with defects resulting from carelessness, incompetence or negligence during use or due to incorrect installation or maintenance by unqualified and unauthorised personnel, or damage caused as a result of circumstances that cannot be traced back to fabrication defects, are not covered by the guarantee. The Customer shall not be entitled to the warranty if he does not report the faults and defects in the seller’s goods within 8 days of discovering them, sending a detailed description of said faults and defects by registered mail with receipt or by certified e-mail. If the faults reported are acknowledged as such, the Manufacturer will provide for replacement at the soonest, without the buyer being entitled to suspend the payments in progress. Any replacement shall not extend or renew the warranty conditions. Any missing goods must likewise be reported by the buyer, at the time of receipt, by entering a claim in that regard in the delivery note to be returned to the Manufacturer.

10. LIMITED LIABILITY OF THE SELLER The Manufacturer will not be held liable for injury or damage to persons or property either directly or indirectly deriving from incorrect installation, use or maintenance of the products sold.

11. COURT OF COMPETENT JURISDICTION For any controversy that may arise regarding the interpretation and/or execution of these general conditions of sale, the court of competent jurisdiction will be the Court of Urbino.

12. DATA PROTECTION CODE Pursuant to Leg. Dec. 196/2003 and subsequent amendments relating to the protection of persons and other individuals, having acknowledged that data will be used according to the principles of good practice, legality and transparency set to safeguard the confidentiality and rights of the Customer, the latter expresses his explicit consent to processing of the data relating to him in order to fulfil civil, tax and accounting law requirements, including those pertaining to tenders and relevant regulations. More specifically, the data handling may be communicated or extended to the Manufacturer’s parent and/or associated or subsidiary companies, to credit institutes charged by the Manufacturer to fulfil any contractual obligations between the Customer and the Manufacturer and/or to companies assigned by the latter to fulfil legal and/or contractual requirements in regard to relations with the Customer. The Customer expresses his explicit consent to use of the data in question also to enable the Manufacturer to carry out market analysis and draw up sales statistics. The Data Handler is the Manufacturer at its Registered and administrative headquarters, where the latter will prepare, maintaining it constantly available and up-to-date, a list of the Data Processing Officers, including the Representative of the Data Handler for this Country. The Customer may exercise his rights with respect to the Data Handler, in particular the right to request that the data be deleted and that handling be restricted based on laws in force from time to time.

WARNING!

WHEN INSTALLING THE TANKS UNDERGROUND, THE INSTRUCTIONS SUPPLIED BY THE COMPANY MUST BE FOLLOWED SCRUPULOUSLY

The data reported in this price list is purely indicative. ROTOTEC reserves the right to modify or improve the products illustrated without prior notification. ROTOTEC can make its technical office available for the design and realisation of customised products and/or for satisfying the particular needs of its clientèle. Dimensional tolerance $\pm 3\%$, capacity tolerance $\pm 5\%$

510 SYSTEM G

STEPS
towards
the future



WASTEWATER FREE



Rototec S.p.a.
via dell'Artigianato, 6
61026 Lunano (PU)
tel. (+39) 0722 7228
fax (+39) 0722 70599

www.rototec.it
info@rototec.it

Rototec S.p.A.
is a company belonging to the
 **SYSTEM GROUP**
www.tubi.net

ISO 9001
BUREAU VERITAS
Certification

Certificate N° IT231900