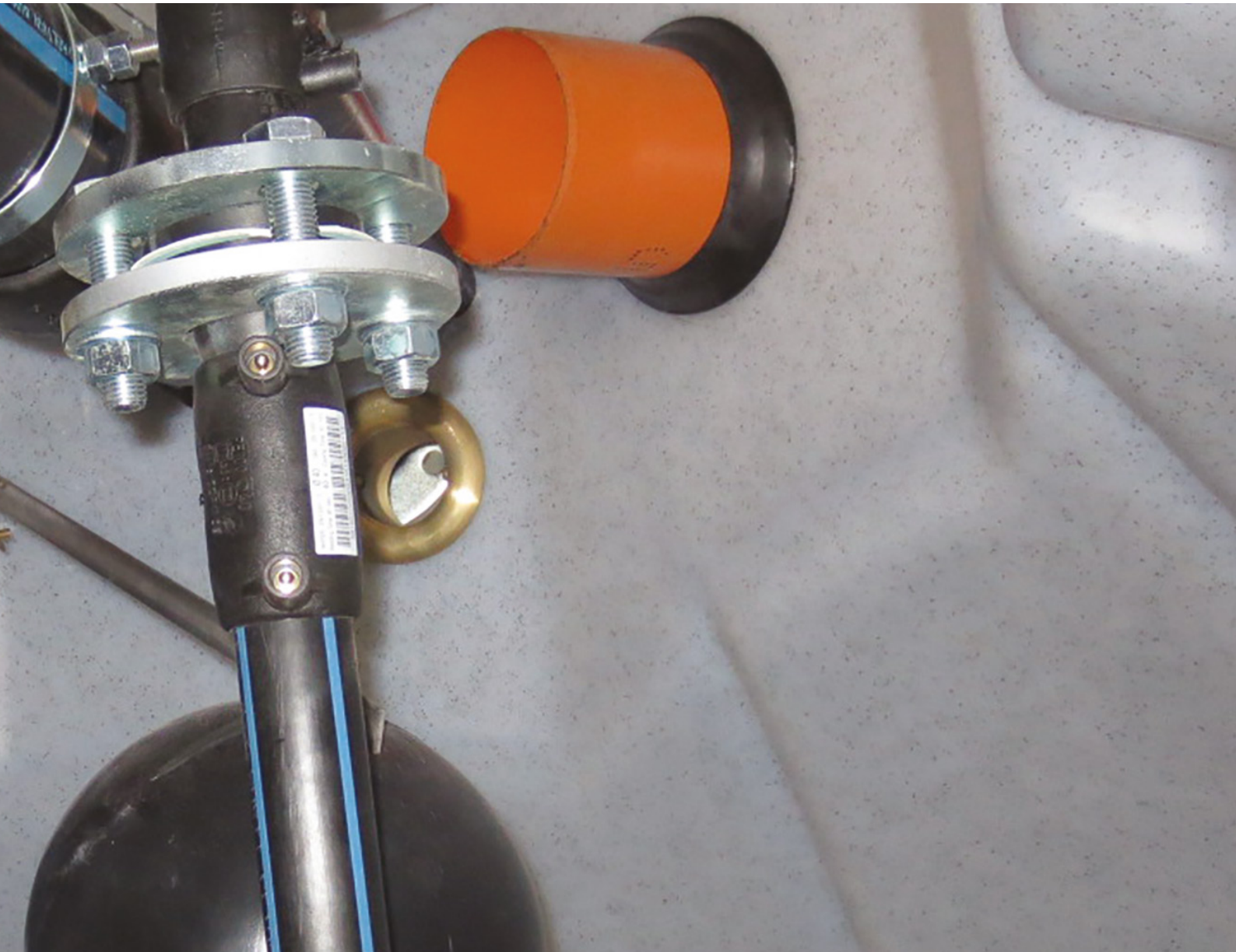
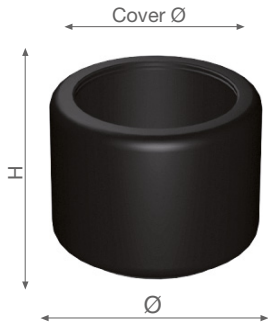


ACCESSORIES



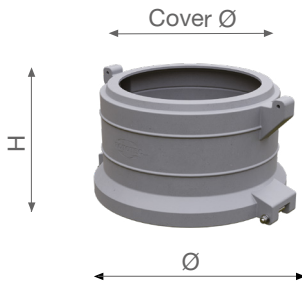
ACCESSORIES



THREADED EXTENSION

Item	Ø mm	H mm	Cover Ø mm
PP30	300	300	210
PP35	435	300	300
PP35RIM	300	300	210
PP45	535	300	400
PP60RIM	535	300	400

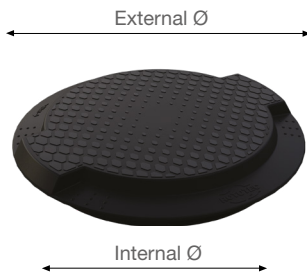
Application: Installing the extensions enables the tops of the tanks to be located below ground level. More than one extension can be used at the same time (See chapter on Underground installation)



HINGED TOP EXTENSION

Item	Ø mm	H mm	Cover Ø mm
PP75	750	430	630
PP77	750	430	630
PP25	750	250	630

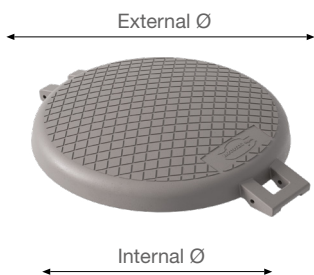
Application: installing the extensions enables the tops of the tanks to be located below ground level. More than one extension can be used at the same time (See chapter on Underground installation)



THREADED COVER IN PP*

Item	Internal Ø mm	External Ø mm
CC140	120	140
CC200	210	250
CC300	300	355
CC400	400	454
CC600	600	611

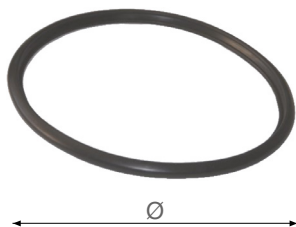
* supplied with treatment tanks



HINGED COVER IN PE

Item	Internal Ø mm	External Ø mm
TAP700*	630	800
TAP800*	630	800

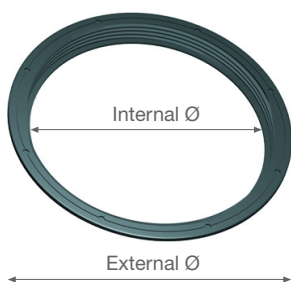
* green colour available on request



COVER GASKET

Item	Internal Ø mm	Cover model
GC255	255	CC 200 - CS 200
GC355	350	CC 300 - CS 200
GC455	460	CC 400 - CS 200
GC600	620	CC 600
GC10700	630	TAP800

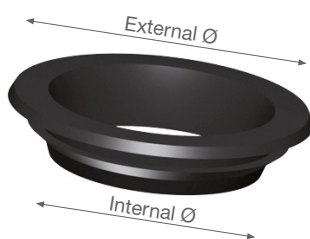
Application: the gaskets are used to improve the seal between the cover and the tank manhole on underground tanks. The gaskets are fitted directly onto the threaded or hinged cover (GC10700). Material: NBR rubber (model GC10700: adhesive gasket).



THREADED RING

Item	External Ø mm	Internal Ø mm	Tooth H mm
AF154	155	120	10
AF255	255	210	30
AF355	355	300	30
AF455	455	400	30
AF600	617	600	30

Application: the female threaded ring is installed and riveted on polyethylene tank manholes when custom inspection holes need to be created. Threaded covers can then be screwed into the rings.



GASKET

Item	External Ø mm	Internal Ø mm	L mm	Cutter Ø for gasket hole mm
GG50	95	50	8	60
GG63	110	63	8	75
GG80	125	80	8	89
GG100	145	100	8	110
GG110	150	110	8	127
GG125	160	125	10	140
GG125 S 15	160	125	13	140
GG160	200	160	10	170
GG200	230	200	10	210
GG250	280	250	10	260

Application: the rubber gaskets are used when it becomes necessary to install stub pipes on polyethylene tanks (e.g. to create inlets, outlets, etc.). When installed correctly, these gaskets provide a perfect seal.

Installation: A hole must be cut in the polyethylene tank using a circular hole cutter. The gasket is inserted in the hole. The stub pipe is then inserted in the gasket itself.

ACCESSORIES

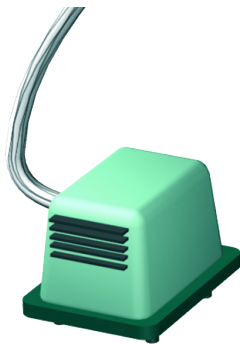


CONNECTING PIPE IN PE

Item	Ø mm
6TRPE040S	40
6TRPE050S	50
6TRPE063S	63
6TRPE075S	75
6TRPE090S	90
6TRPE125S	125
6TRPE160S	160
6TRPE200S	200
6TRPE250S	250

Description: stub pipes in smooth HDPE, extrusion welded to form a perfect waterproof seal.

Application: when installed on the tanks, it allows the storage tank to be connected to the various draw-off systems for the liquid it contains: taps, irrigation systems, pumping systems. It also allows the tanks to be connected to each other (both underground and above-ground tanks) to provide very high storage volumes.



COMPRESSOR BLOWER

Item	Voltage V	Frequency Hz	Power W	Flow rate l/min	Noise level dB	Weight kg	Max. length mm	Max. width mm	Max. height mm
HP40	230	50	38	40	<37	5.7	250	185	190
HP60	230	50	56	60	<39	7	250	185	196
HP80	230	50	78	80	<41	7	250	185	196
HP150	230	50	145	160	<50	9	300	230	230
HP200	230	50	186	200	<50	12	300	230	250

Description: diaphragm type air compressors used in activated sludge systems to develop an aeration system necessary for the aerobic bacteria digestion processes, making use of the electromagnetic vibration of an actuator rod supported by synthetic rubber diaphragms.



SIDE CHANNEL BLOWER

Item	Voltage V	Frequency Hz	Power kW	Amps A	Noise level dB	Weight kg
HP302SF	230	50	0.7	4.5	<55	15
HP402SF	380	50	1.6	5.6	<66	24
HP502SF	380	50	3	10	<72	38

Description: compressors-aspirators constructed in accordance with the side channel principle, operating both in aspiration and in compression. They are designed to operate continuously. Constructed in die-cast aluminium to guarantee maximum sturdiness and ease of handling. Specially designed silencers contribute to its extremely low noise levels.



ELECTRIC TIMER PANEL

Item	Dimensions mm	Amps A	Power supply V
QST	210x210x100	6	230
QST3F (THREE-PHASE)	280x400x140	6	380

Description: electric panel controlling and protecting the diaphragm blowers serving activated sludge treatment plants. Thanks to the 24 hour segment timer, it is possible to set the blower to switch on and off automatically as required by the treatment plant.

ELECTRIC TIMER PANEL FOR DUAL BLOWER



Item	Dimensions mm	Amps A	Power supply V
QS2T	310x250x150	6	220

Description: electric panel controlling and protecting the diaphragm blowers serving activated sludge treatment plants. Thanks to the 24 hour segment timer, it is possible to set the blower to switch on and off automatically as required by the treatment plant.

SOCKET TIMER FOR BLOWERS



Item	Dimensions mm
TMP	70x70x40

Description: socket timer used to set the activation times of blowers-compressors. Fitted with segment timer with 15 minute intervals.

DIFFUSER PLATE



Item	ø mm	Weight kg	Max. air flow m3/h	ø bubbles mm	Flow rate l/min	Oxygenation capacity gO2/Nm3 per metre of head
IFADN	214	2.1	5	1-3	40	18-20

Description: diaphragm type diffusers in microbored rubber used in activated sludge plants and designed to provide a uniform distribution of air with bubbles of microscopic diameter designed to optimise performance

DIFFUSER DISC



Item	ø mm	Weight kg	Max. air flow m3/h	ø bubbles mm
IFADN250	250	1	5	1-3

Description: disc type membrane diffuser with rubber surface containing micro-holes that act as a valve, expanding to release air and re-closing to prevent water from entering once the flow has been interrupted.

ACCESSORIES



TUBULAR DIFFUSER

Item	Diameter	Weight kg	Length	Max. air flow m ³ /h	ø bubbles mm
IFADNT600	3"	0.9	23.5"	15.3	1-3

Description: air diffusers characterised by a rubber surface with micro-holes that act as a valve, expanding to release air and re-closing to prevent water from entering once the flow has been interrupted.



DIFFUSER KIT (IFADN)

Item	Tube length mm
IFA 1D	according to the depth of the tank
IFA 2D	according to the depth of the tank

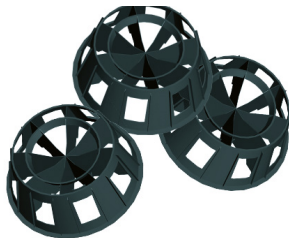
Application: when connected to a diaphragm type blower and to one or more diffuser plates and installed inside a tank, aerates and agitates the content, either continuously or intermittently.



CHLORINE TABLET

Item	Weight mg	Diameter mm	Height mm
IFACC	200	75	25

Description: chlorine tablet consisting of trichloroisocyanuric acid with 90% active chlorine for long-lasting action. The disinfectant is released over a longer period of time (approximately 30-60 days) thanks to its particular molecular structure



FILTER MEDIA FOR PERCOLATING FILTERS

Item	Shape	Dimensions mm	Specific surface area m ² / m ³	Void index %	Dry weight kg / m ³	Weight during service kg / m ³	Material
BIOWE120	circular	170	120	approx. 95	38	approx. 350	Black isotactic polypropylene

Description: bulk filter media developed especially for the construction of medium-load percolating filter beds treating domestic or biodegradable industrial effluent. The advantages of using this type of filter media are linked to the high specific surface area and the high void index.



SINGLE DOSE BIO-ACTIVATOR SACHETS

Item	Description	Weight g
IFABIO	Single dose activator sachet for septic tanks	200

Function: biological activator in powder form, supplied in a single-dose sachet, to speed up the activation time of biological processes that normally develop in waste water treatment plants. Dissolve in a bottle of warm water and pour directly into the WC or into the tanks.

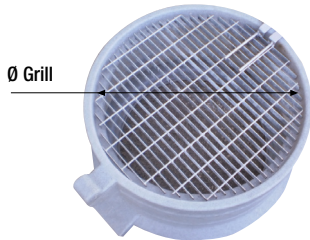
SPECIFIC CONCENTRATED BIO-ACTIVATOR



Item	Description	Weight g
IFABIODEG	Bio-activator specific for the activation of degreasers	750
IFABIOAN	Bio-activator specific for the activation of anaerobic treatment plants (septic or Imhoff tanks, anaerobic percolating filters,...)	750
IFABIOIFA	Bio-activator specific for the activation of aerobic treatment plants (activated sludge plants, aerobic percolating filters,...)	750

Function: concentrated biological activator in powder form, supplied in a 750g container, to speed up the activation time of biological processes that normally develop in sewage treatment plants. Dissolve in a bottle of warm water and pour directly into the WC or into the tanks. Available in three specific types for activation of the various tanks making up a treatment plant.

ACCESSORIES



SAFETY GRILL

Item	Ø grill mm	Mesh length mm	Mesh width mm
GRANT	730	75	30

Application: the pedestrian grill is a safety device that prevents unintentional entry into the tank.
Installation: The grill is fitted directly on the underground corrugated tank inspection hatch (Cisterna, Panettone and Canotto tanks) and is fastened using the pins provided. It can be mounted directly on the tank manhole or on a hinged cover extension.



ELECTRIC FLOAT

Item	Float dimensions mm	Cable length m	Amps A	Voltage V	Protection grade	Max. temperature °C
GAL 5	80x100x40	5	10 (4)	250	IP 67	60

Application: float level switch for fresh water pump start/stop.



ONE-PIECE POLYPROPYLENE CHAMBER

Item
PM20X20G
PM20X20V
PM30X30G
PM30X30V

Application: chamber used for water drainage, as a junction inspection chamber and as an extension for grease separators with separation baffles. Supplied with polypropylene (PP) cover. Cast iron cover available on request.



ELECTROWELDABLE PE SLEEVE PN10

Item
MAN 90
MAN 125
MAN 160